

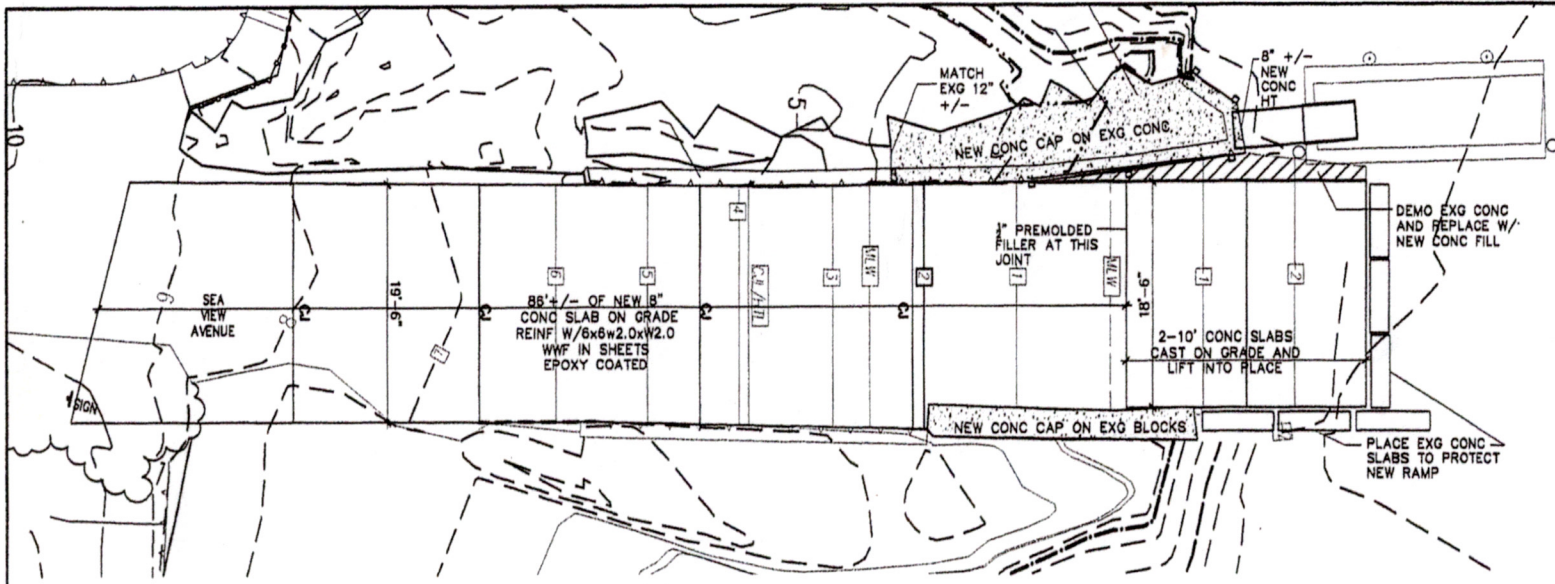


Gibbie Horan Champion Brown Consulting Engineers, Inc.

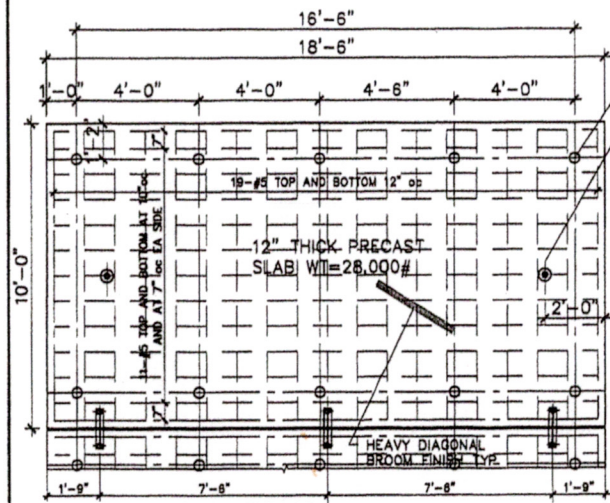
130 ELM STREET
POST OFFICE BOX 802
OLD SAYBROOK
CONNECTICUT 06475
PHONE: 860 388 1224
FAX: 860 388 4613
GNCBENGINEERS.COM

KEYNOTES / GENERAL NOTES:

1. CONCRETE TO BE $f_c = 4500$ PSI AIR ENTRAINED.
GROUT TO BE MINIMUM 3000 PSI, AIR ENTRAINED.
2. ALL REINFORCING TO BE EPOXY COATED
3. CONCRETE MUST OBTAIN 3500 PSI PRIOR TO LIFTING.
4. EPOXY TO BE HILTI HIT-HY 150 OR EQUIVALENT.
5. CJ TO BE TOOLED SLAB CONTROL JOINT.
6. SEE PERMIT DOCUMENTS BY DOCKO, INC FOR ADDNL INFO.



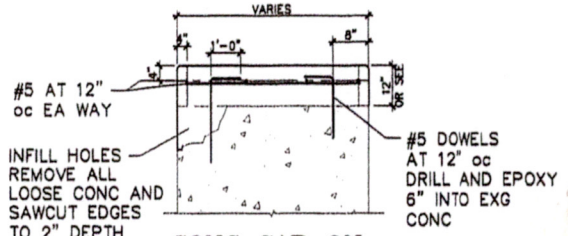
PLAN
SCALE: 1"=10'



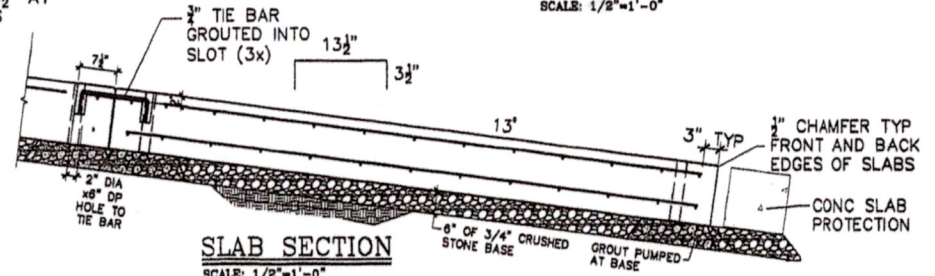
SLAB PLAN
SCALE: 1/4"=1'-0"

4" DIA HOLE GROUT AFTER SETTING SLABS 10 PER SLAB

BTNx10" SS DAYTON P52 SWIFT LIFT ANCHOR (2x). OPTION: USE 4-4TNx9 1/2" AT CORNERS



CONC CAP ON EXISTING CONC/BLOCKS
SCALE: 1/2"=1'-0"



SLAB SECTION
SCALE: 1/2"=1'-0"

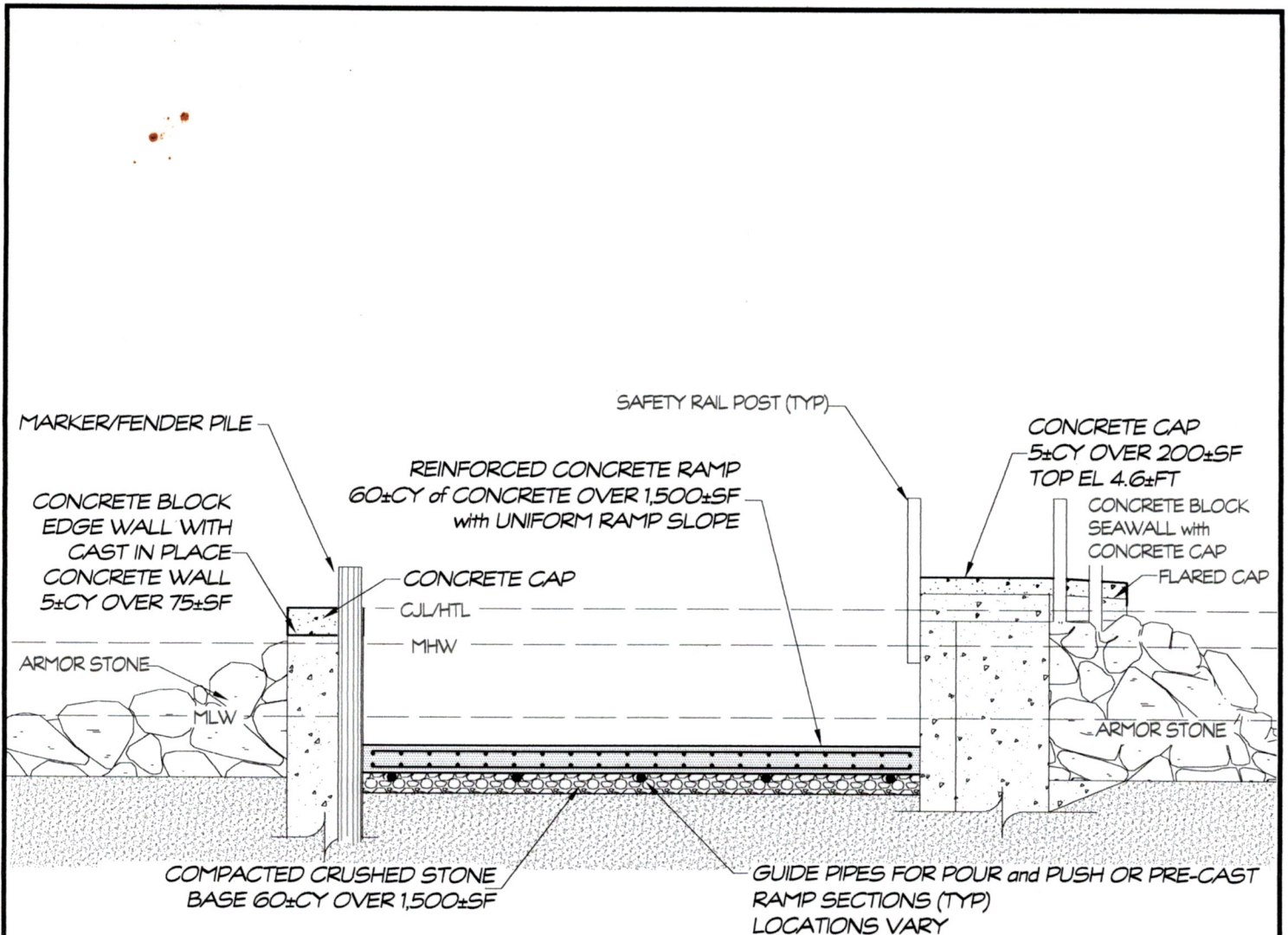
BOAT LAUNCH RAMP

END OF SEAVIEW AVE.
OLD BLACK PT

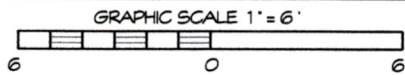
CONSTRUCTION

DATE: MAR. 31.2018
PROJECT: #18044
SCALE:
DRAWN BY: CCB
CHECKED BY:

DWG. NO.
S1



RAMP END VIEW AS-BUILT



ELEVATIONS ARE BASED ON MEAN LOW WATER

DRAFT
Asbuilt

REVISED 2-10-16 DEEP
 ADDITIONAL SHEET
 REVISED 3-9-16 DEEP
 EDGE WALL & CONC. CAPS
 REVISED 6-15-18 DEEP
 AS-BUILT CONDITIONS

PROJECT: LAUNCH RAMP RECONSTRUCTION AS-BUILT

LOCATION: BLACK POINT - TOWN of EAST LYME
 NEW LONDON COUNTY, CONNECTICUT
 WATERWAY: NIAN TIC BAY - LONG ISLAND SOUND

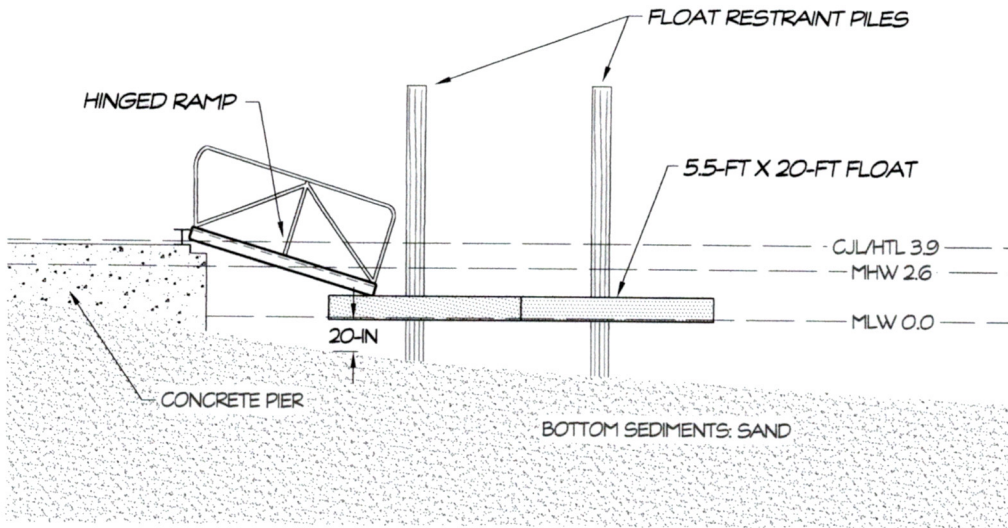
DATE: OCTOBER 27, 2015
 APPLICANT: BLACK POINT BEACH CLUB ASSOCIATION
 AGENT: SHEET 4A ADDITIONAL

DOCKO, INC.

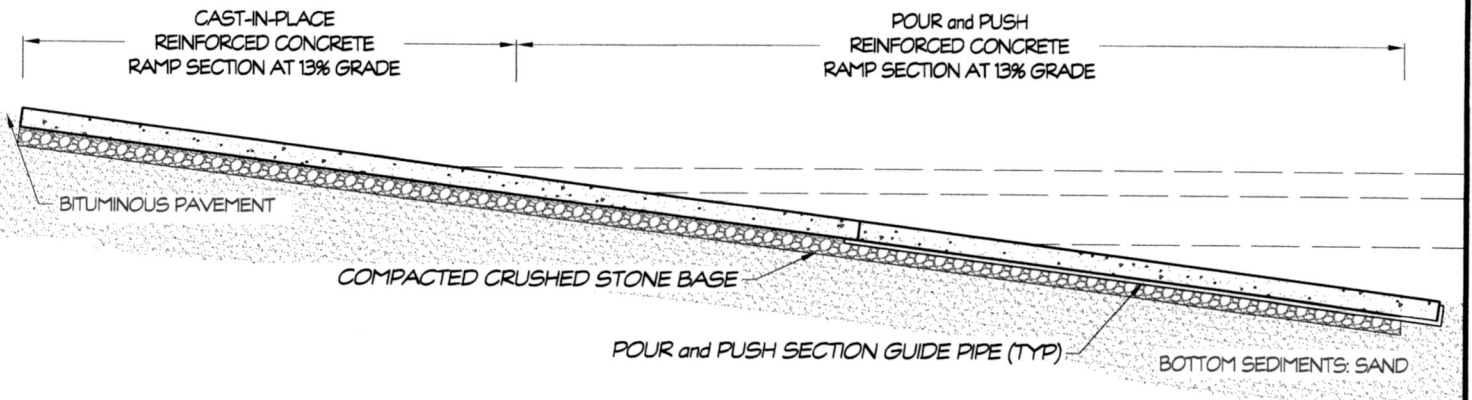
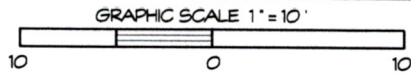
Keith B. Nelson, PE
 Mystic, CT 06355
 860 572 8939 FAX 860 572 7569
 EMAIL: office@docko.com



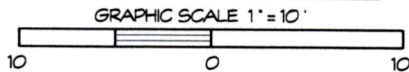
DWG 04-12-1650



**STAGING FLOAT PROFILE
AS-BUILT**



**RAMP PROFILE
AS-BUILT**



ELEVATIONS ARE BASED ON MEAN LOW WATER

**DRAFT
Asbuilt**

REVISED 2-10-16 DEEP
UNIFORM RAMP SLOPE

REVISED 6-15-18 DEEP
AS-BUILT CONDITIONS

PROJECT: LAUNCH RAMP RECONSTRUCTION
AS-BUILT
LOCATION: BLACK POINT - TOWN of EAST LYME
NEW LONDON COUNTY, CONNECTICUT
WATERWAY: NIAN TIC BAY - LONG ISLAND SOUND
DATE: OCTOBER 27, 2015
APPLICANT: BLACK POINT BEACH
CLUB ASSOCIATION
AGENT: SHEET 4 OF 4
DOCKO, INC.
Keith B. Neilson, PE
Mystic, CT 06355
860 572 8939 FAX 860 572 7569
EMAIL: office@docko.com



DWG 04-12-1650